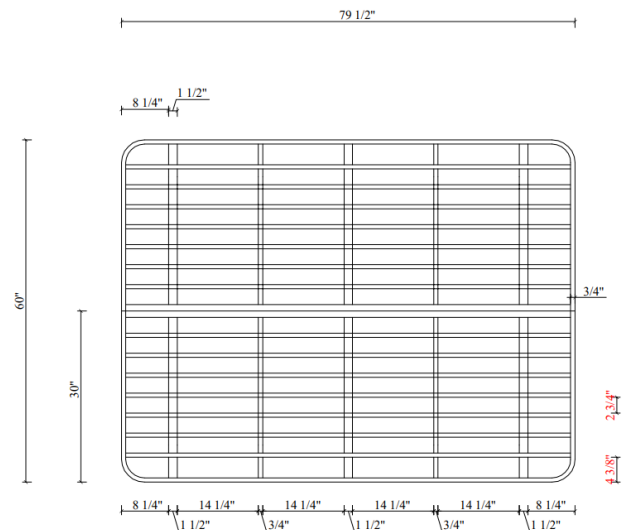
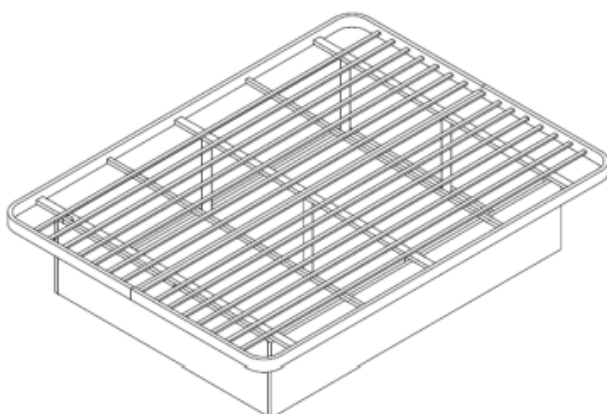


METAL BED BASE SPECIFICATION

- Supports up to 3,000lbs
- The base and slats are made with 100% heavy gauge steel.
- Complete 4-sided panels made of solid steel.
- Rigid, rectangular slats, powder-coated black.
- Easy to assemble (tools and hardware included).
- Available in King, Queen, and Full XL sizes.



- Material: Powder coated steel , black



King : 76" W x 79 1/2" L x 17" H
 Queen : 60" W x 79 1/2" L x 17" H
 Full XL: 54" W x 80" L x 17" H